

Killer RC Body Wraps How-To



Here is what we're starting with:

Freshly painted black Pro-line body:



Killer RC Skulls decal kit:



Upon opening your decal kit you will quickly notice that it wants to stay rolled up:



Take a moment to tape your decal sheet to a clean flat surface and this will make your installation much easier:



Next we're gonna grab a clean (preferably new) spray bottle (about 20oz), a bottle of general household dishwashing soap, and something with a firm rounded straight edge (I'm using a squeegee but a credit card will also work). Fill the bottle about 3/4 of the way full of clean tap water (I've used about 18oz in this demo):



Now you're going to put about two drops of dishwashing liquid in the bottle of water:



IMPORTANT

This is what I mean by two drops. If you use more your decals will not stick!



Explanation of that step: you're adding just enough dishwashing liquid to make your decals a little more manageable and move around on the surface.

Gently shake the bottle just enough to start getting bubbles at the top:



Now start peeling the decal away from the decal sheet one at a time:



Lay the decal graphic side down on the table and now comes the part that may freak people out a little. In this step you're going to saturate the adhesive side of your decal and the body itself with the bottle of solution.

NOTE: Killer RC decals are made very well and you won't be able to put enough water on them to have any negative effect. However, if you're using another type of decal please follow their recommended installation instructions.



Now flip the graphic and lay it on the body and you will notice that it's a little more manageable. If the water starts to dry up, apply more. Get your decal in its location and (using the squeegee/credit card) start GENTLY pushing the water from under the graphic:

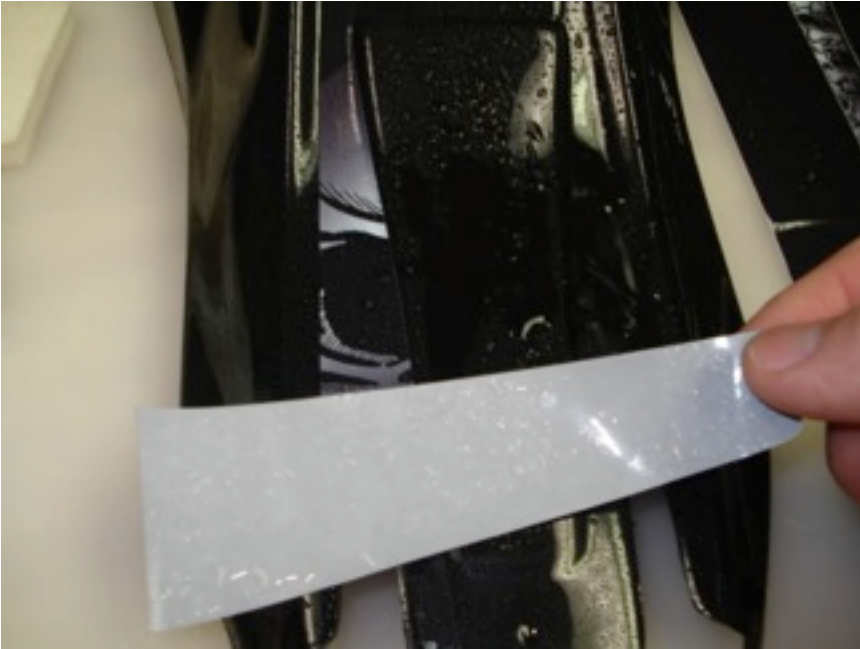


After the water is pushed from under the decal dry the remaining excess with a clean towel:

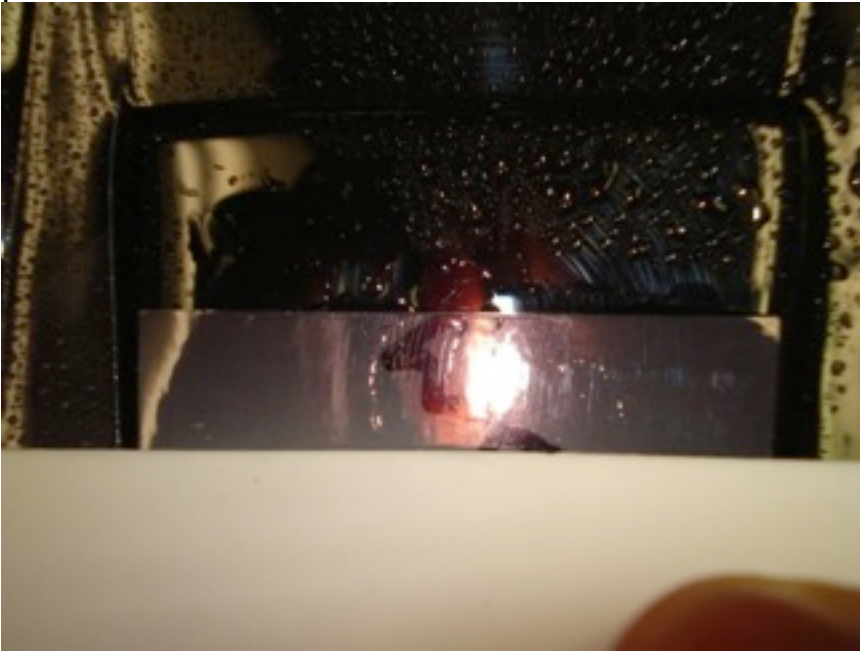


Check for bubbles and placement then move on to the next decal.

Follow the same steps for each.



push out the water.



This process is pretty simple and the finished product will actually leave you with a perfect, bubble free installation:

